

Versant Power Open Customer Meeting- Maine Public District

June 28, 2022

Welcome

This open customer meeting is an annual event in which Versant Power as your electric transmission provider discusses our annual transmission rate update.

We appreciate your time today and thank you for joining us.

Agenda

- Welcome (*Marissa Minor*)
- Safety Message (*Gina LeBlanc-Eggert*)
- Introductions (*John Flynn*)
- Versant Power & Rates Overview (*Stephen Johnston*)
- Retail Transmission Rates Effective July 1 (*Lloyd Maynard*)
- Closing Remarks (*Stephen Johnston*)
- Discussion and Questions (*All*)

The Importance of Safety Programs in the Workplace



Certification Card **BasicPlus** **2010**
CPR, AED, and First Aid For Adults

Thomas Morin
has successfully completed and competently performed
the required knowledge and skill objectives for this program.


MEDIC First Aid

Joe Thibodeau
Authorized Instructor (Print Name)
148673
Registry No.

8/2021
Class Completion Date
207-760-2547
Training Center Phone No.

8/2023
Expiration Date
148661
Training Center I.D.

This card certifies the holder has demonstrated the required knowledge and skill objectives to a currently authorized MEDIC First Aid Instructor. Certification does not guarantee future performance, or imply re-certification or recertification. Course content conforms to the 2010 AHA Guidelines for CPR and ECC, and other evidence-based treatment recommendations. Certification period may not exceed 24 months from class completion. More frequent reinforcement of skills is recommended.

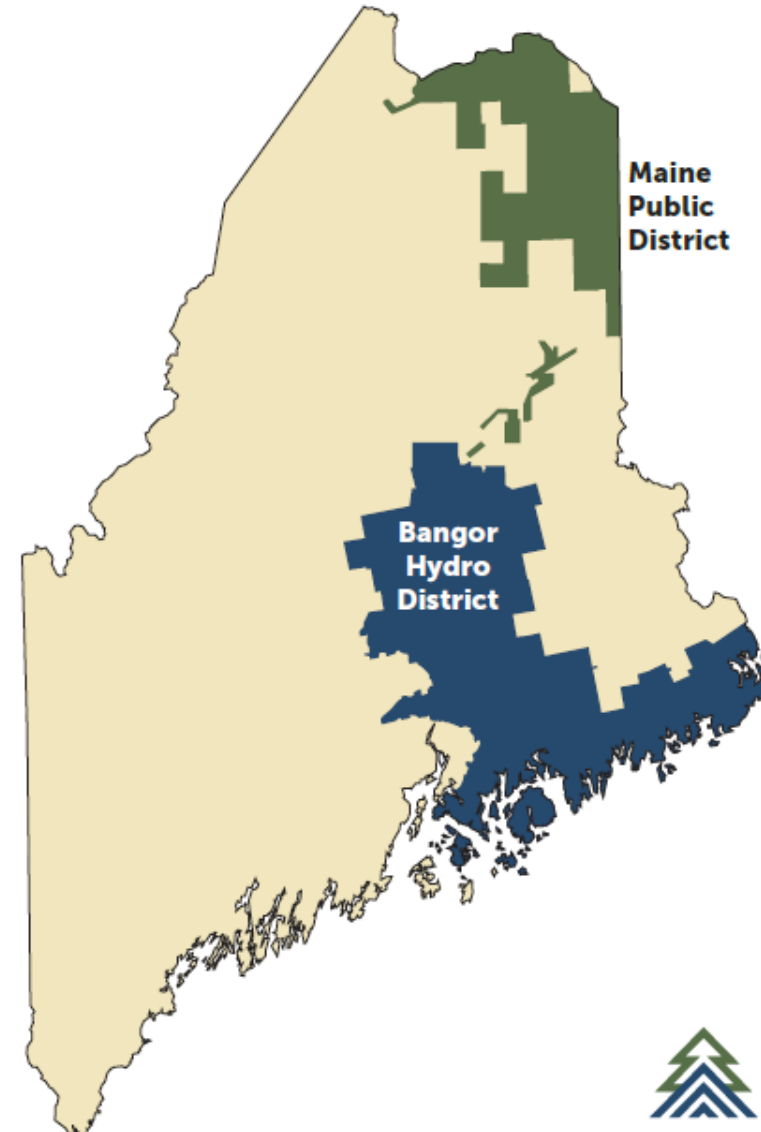


Versant Power Open Customer Meeting- Maine Public District

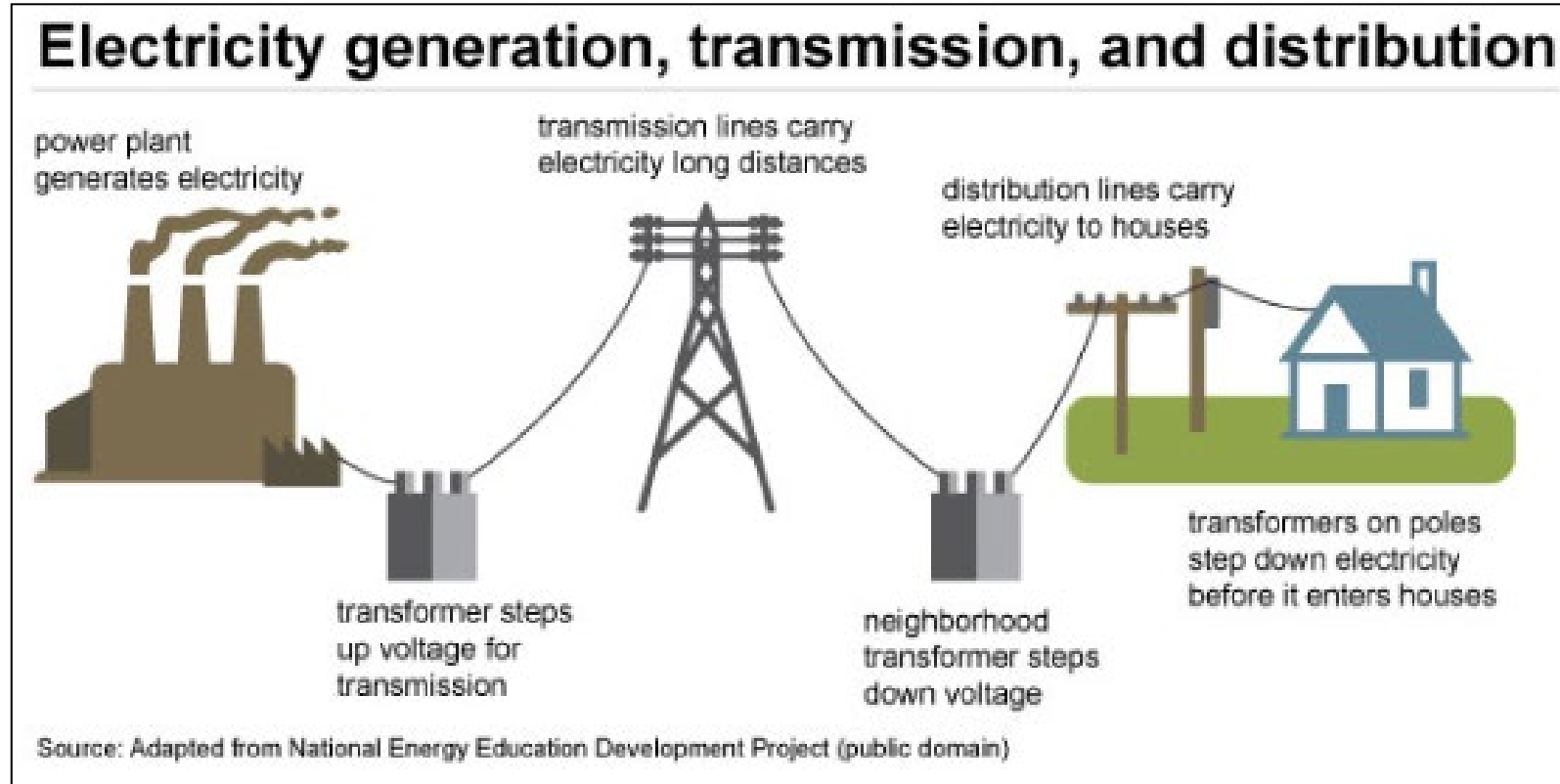
June 28, 2022

Versant Power Service Territory

Service Territory	10,400 sq. miles
Customer Accounts	170,000
Employees	490
Transmission Lines	1,265 miles
Primary Distribution Lines	6,090 miles



Transmission & Distribution



Versant Power delivers electricity supplied by others

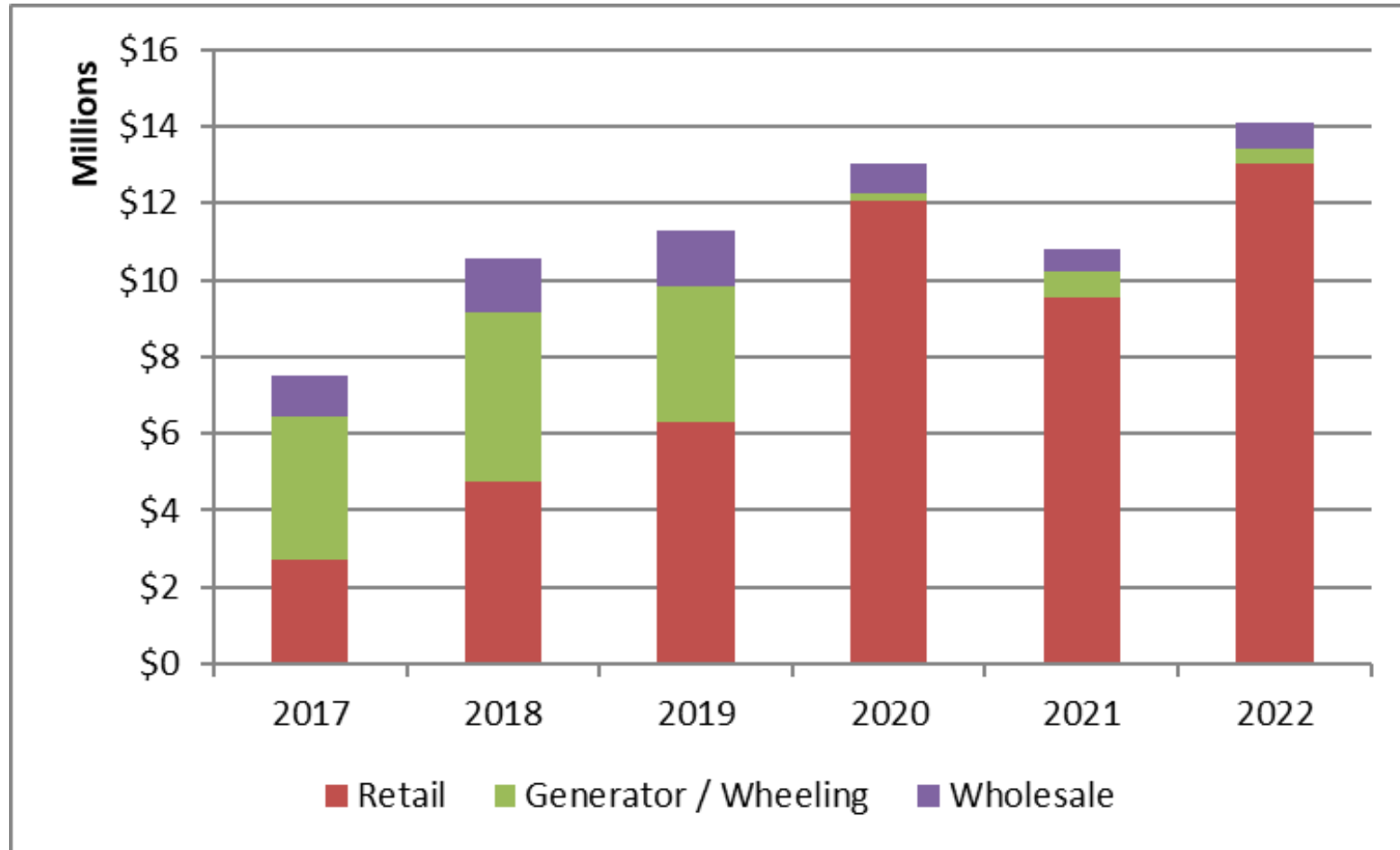
Transmission Rates – Basics

- Versant Power is a cost-of-service utility
- Rates are set based on the cost to provide safe and reliable service, based on an established formula
- Customers pay according to their usage of the electric system
- Versant Power is keeping with the plan to spread needed upgrades to the transmission system over 15-20 years in the most cost effective way to keep the system reliable

Transmission Rate Change on July 1

- Most MPD customers will see their transmission costs increase for delivery of electricity
- A *typical* residential customer using 500 kilowatt-hours per month will see the Transmission component of their bill go up from \$8.84 to \$12.19 per month
 - **Total bill** will decrease slightly from \$104.70 to \$104.09 including changes to Transmission, Stranded Cost and Conservation and typical supply
- Commercial and Industrial rates are also decreasing for most customers
 - Ranges of price changes in following slides
- Versant Power will work offline with any customer who wants an individual analysis

Revenue Contribution by Customer Group



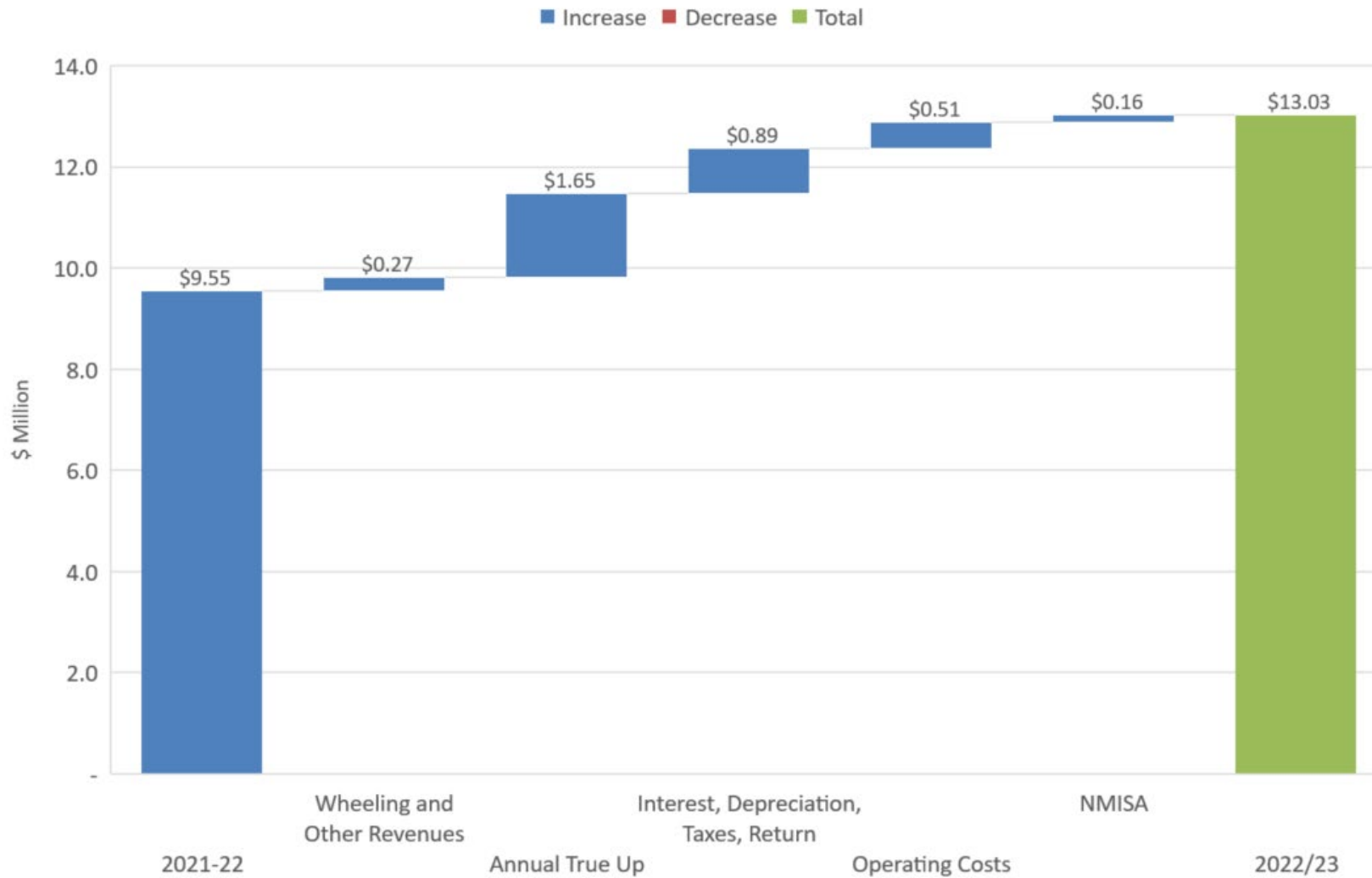
Year over Year Comparison

Maine Public District

	Combined Retail & Wholesale Revenue Requirement Summary			
	2018	2019	2020	2021
Investment Return and Associated Income Taxes	4,774,026	4,723,220	4,727,557	5,223,912
Depreciation	1,635,815	1,621,445	1,779,738	2,017,243
Operating Expense	3,234,537	3,534,978	3,896,580	4,714,502
Versant Power Operating Costs	9,644,379	9,879,642	10,403,876	11,955,658
Adjustments	406,184	(452,824)	866,237	220,783
Annual True Up	1,304,773	3,576,594	(483,377)	1,952,567
Total	11,355,335	13,003,412	10,786,736	14,129,007
	Estimated Revenue by Customer Type			
	2019/2020	2020/2021	2021/2022	2022/2023
Generator Revenue / Wheeling	3,568,910	163,546	674,994	387,291
Wholesale	1,501,317	759,609	559,496	707,787
Retail	6,285,108	12,080,257	9,552,246	13,033,929
	11,355,335	13,003,412	10,786,736	14,129,007

MPD Transmission Retail Revenue Requirement

2021/22 vs 2022/23



Transmission Rate Change - Monthly

July 1, 2022 Transmission Only Rate Change

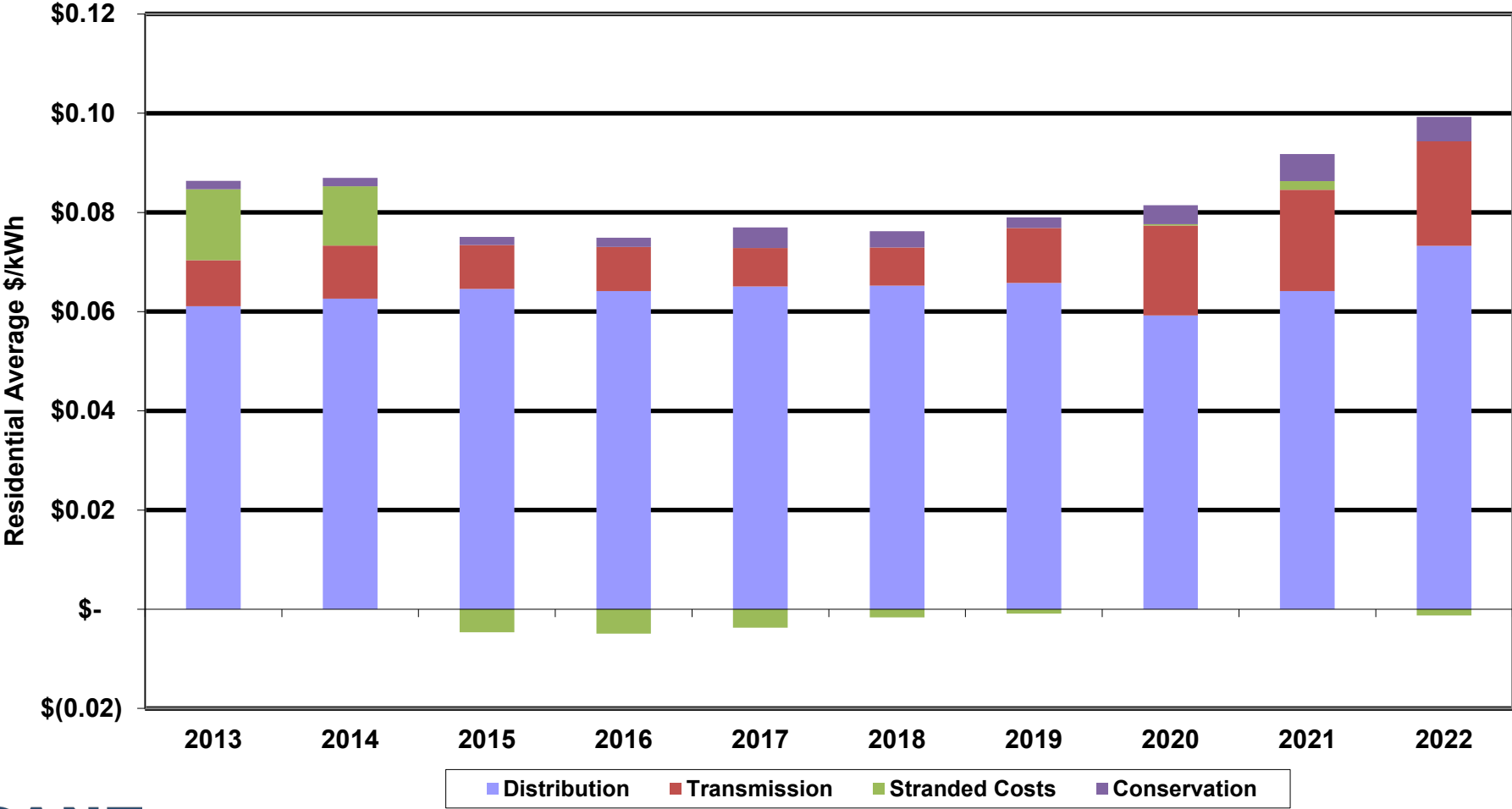
Customer Class	Sample Usage	2022 Change
Residential	500 kWh	\$3.34
General (C)	1000 kWh	\$18.03
Medium (ES)	50 kW – 250 kW	\$80 - \$430
Medium (EP)	100 kW – 350 kW	\$30 - \$110
Large (EP-T)	500 kW – 1,500 kW	\$1,430 - \$4,300
Large (ES-T)	500 kW – 750 kW	\$2,600 - \$3,900
Trans (ST)	1,000 kW – 2,500 kW	\$5,410 - \$13,530
Trans (HT)	1,000 kW – 2,500 kW	(\$2,170) – (\$5,430)

Delivery Rate Impact - Monthly

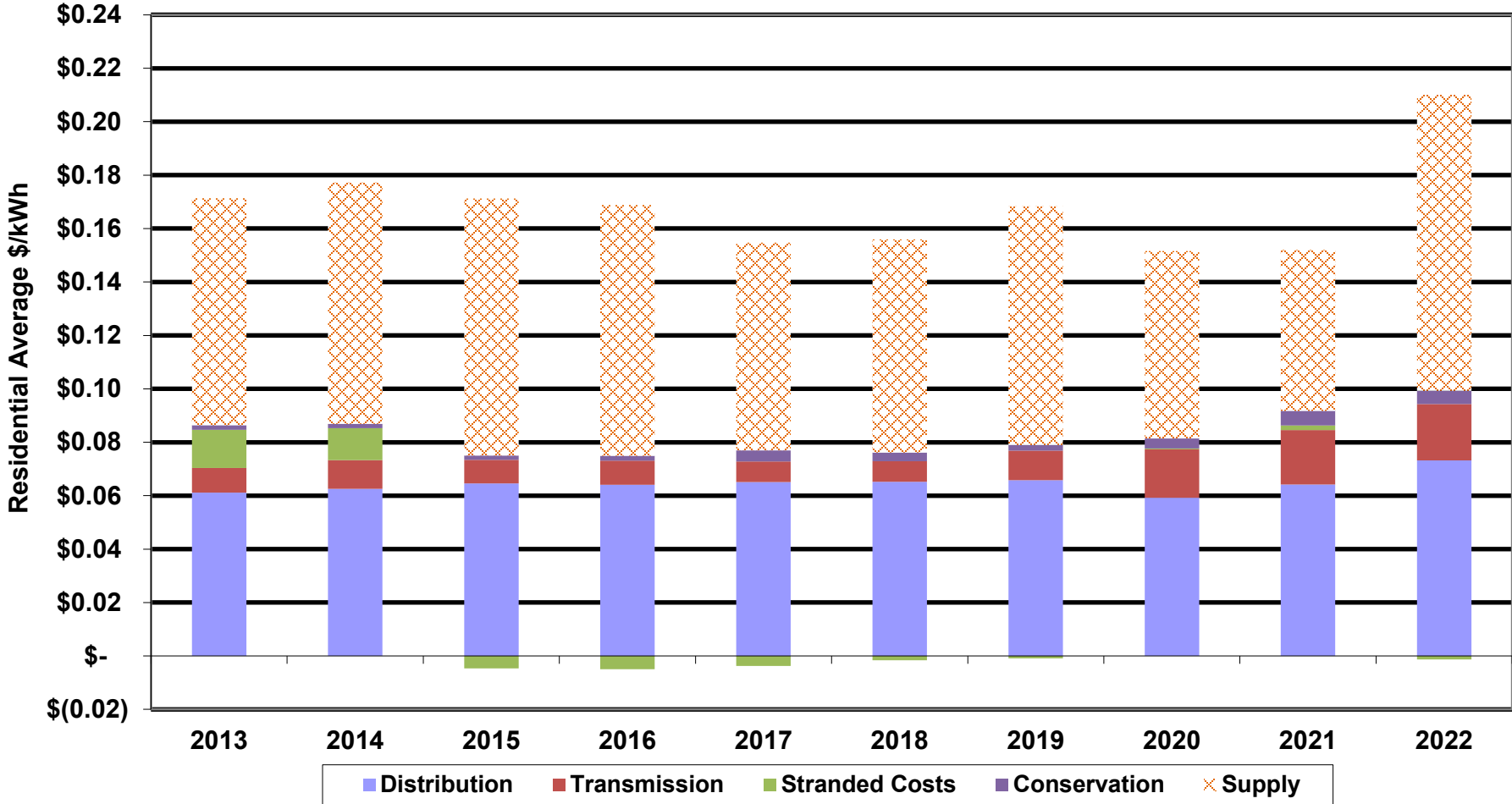
July 1, 2022 Rate Change
For Transmission, Conservation & Stranded Cost

Customer Class	Sample Usage	2022 Change
Residential	500 kWh	(\$0.62)
General (C)	1000 kWh	\$10.10
Medium (ES)	50 kW – 250 kW	(\$58) – (\$290)
Medium (EP)	100 kW – 350 kW	(\$259) – (\$905)
Large (EP-T)	500 kW – 1,500 kW	(\$80) – (\$250)
Large (ES-T)	500 kW – 750 kW	\$620 – \$930
Trans (ST)	1,000 kW – 2,500 kW	\$2,520 – \$6,290
Trans (HT)	1,000 kW – 2,500 kW	(\$5,070) – (\$12,680)

Versant Power - Maine Public District
Delivery Rate Components for Basic Residential Service
2013-2022 Calendar Years
(amounts expressed in 2021 real dollars)



**Versant Power - Maine Public District
Rate Components for Basic Residential Service
2013-2022 Calendar Years
(amounts expressed in 2021 real dollars)**

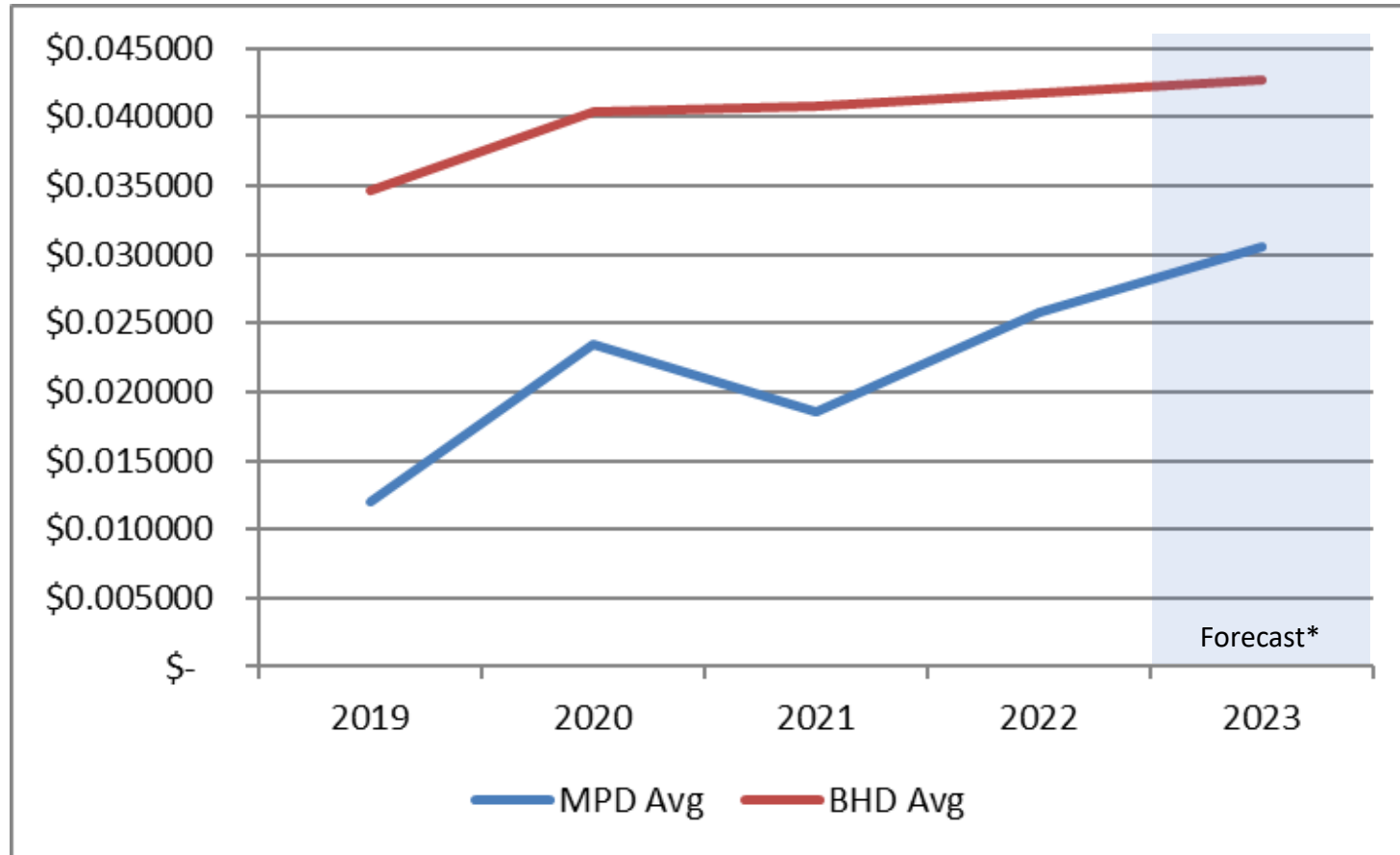


Rate Changes on July 1, 2022

Residential Customer (500 kWh/mo.)

Category	New Rate	Previous Rate	Explanation
Transmission	\$12.19 / month \$0.024373/ kWh	\$8.84 / month \$0.017685/ kWh	<ul style="list-style-type: none"> Continued investment in transmission infrastructure
Stranded Cost	(\$2.44) / month (\$0.004875) / kWh	\$1.18 / month \$0.002364 / kWh	<ul style="list-style-type: none"> Reduction based on currently high forward energy prices Pass-through of State energy policy costs (Energy contracts and Net Energy Billing)
Conservation	\$2.28 / month \$0.00455 / kWh	\$2.62 / month \$0.00524 / kWh	<ul style="list-style-type: none"> Pass-through charge to fund energy efficiency and greenhouse gas reduction programs through Efficiency Maine Trust
Distribution	\$36.62 / month \$0.073249 / kWh	\$36.62 / month \$0.073249 / kWh	<ul style="list-style-type: none"> Current Rates effective since November 2021
TOTAL delivery without supply:	\$48.65 / month \$0.0973 / kWh	\$49.26 / month \$0.0985 / kWh	<ul style="list-style-type: none"> Approximately (\$0.61) / month decrease

Transmission Rate Averages (cents/kWh)



* Preliminary estimate, subject to change

Versant Power

- Committed to delivering safe, reliable electricity to your homes and businesses around the clock
- A transmission and distribution utility that delivers electricity, but doesn't generate or supply the electricity
- Working to keep costs stable while investing in an aging system
- Supporting state renewable energy goals

Questions & Discussion