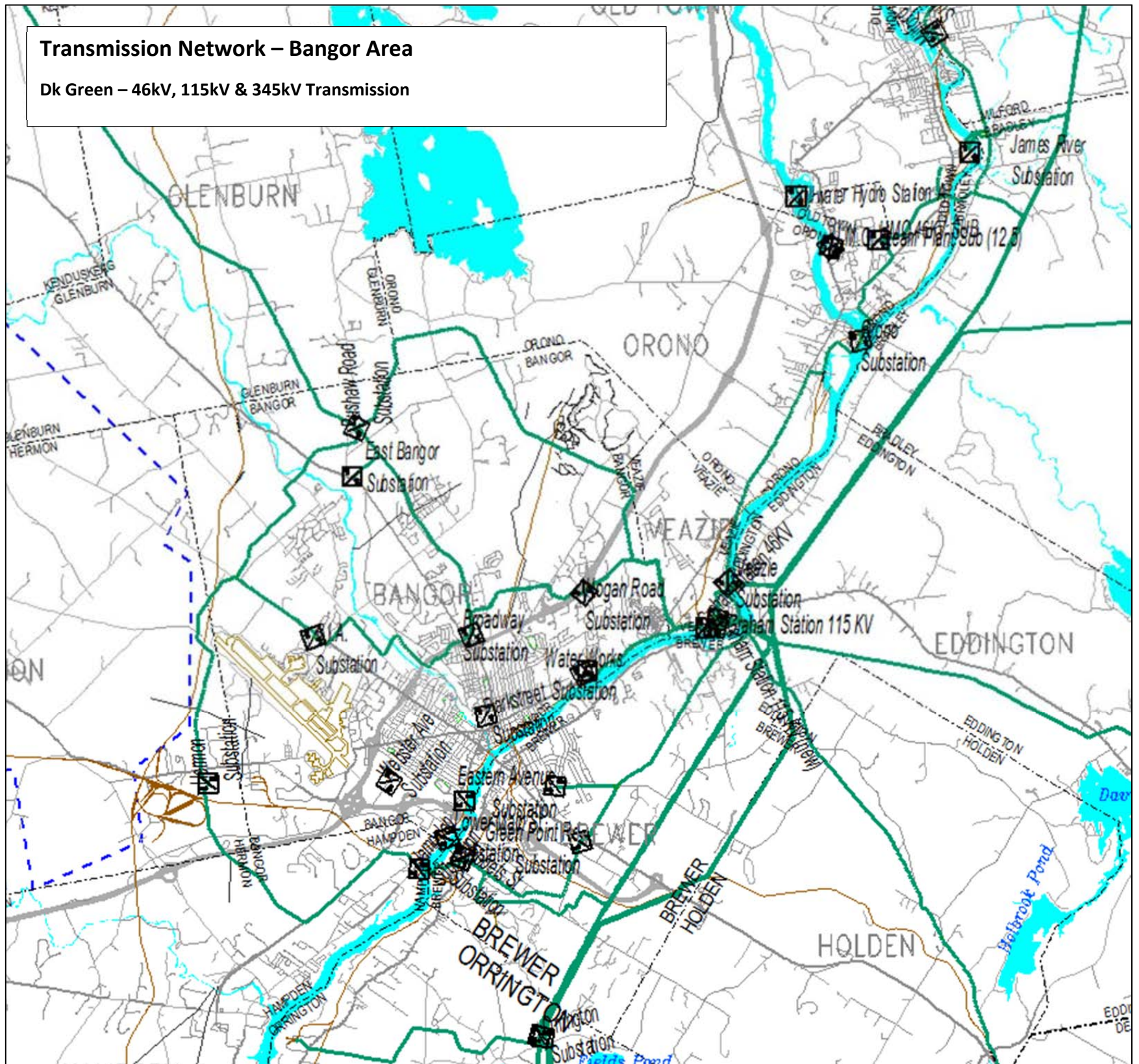


## Transmission Network – Bangor Area

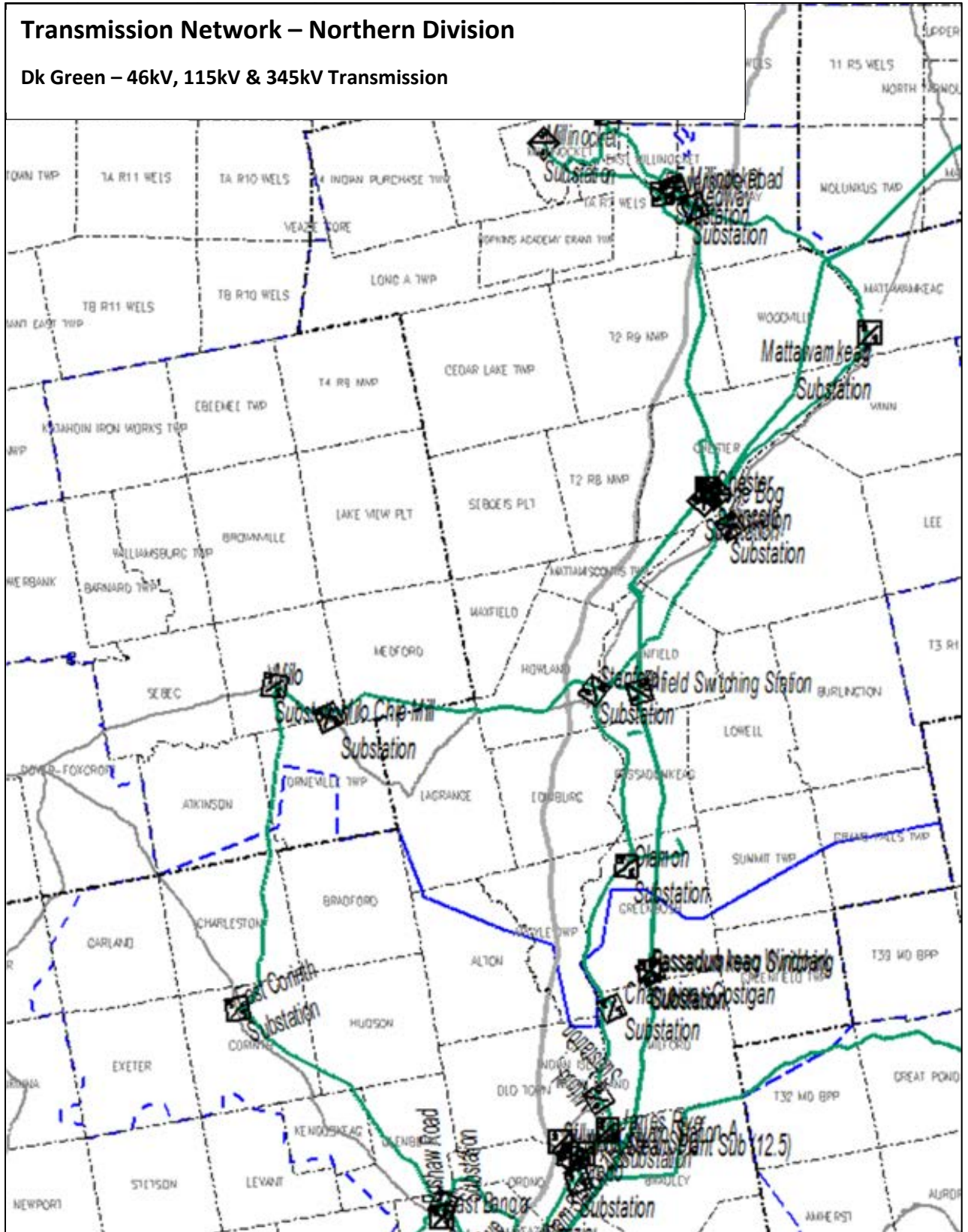
Dk Green – 46kV, 115kV & 345kV Transmission

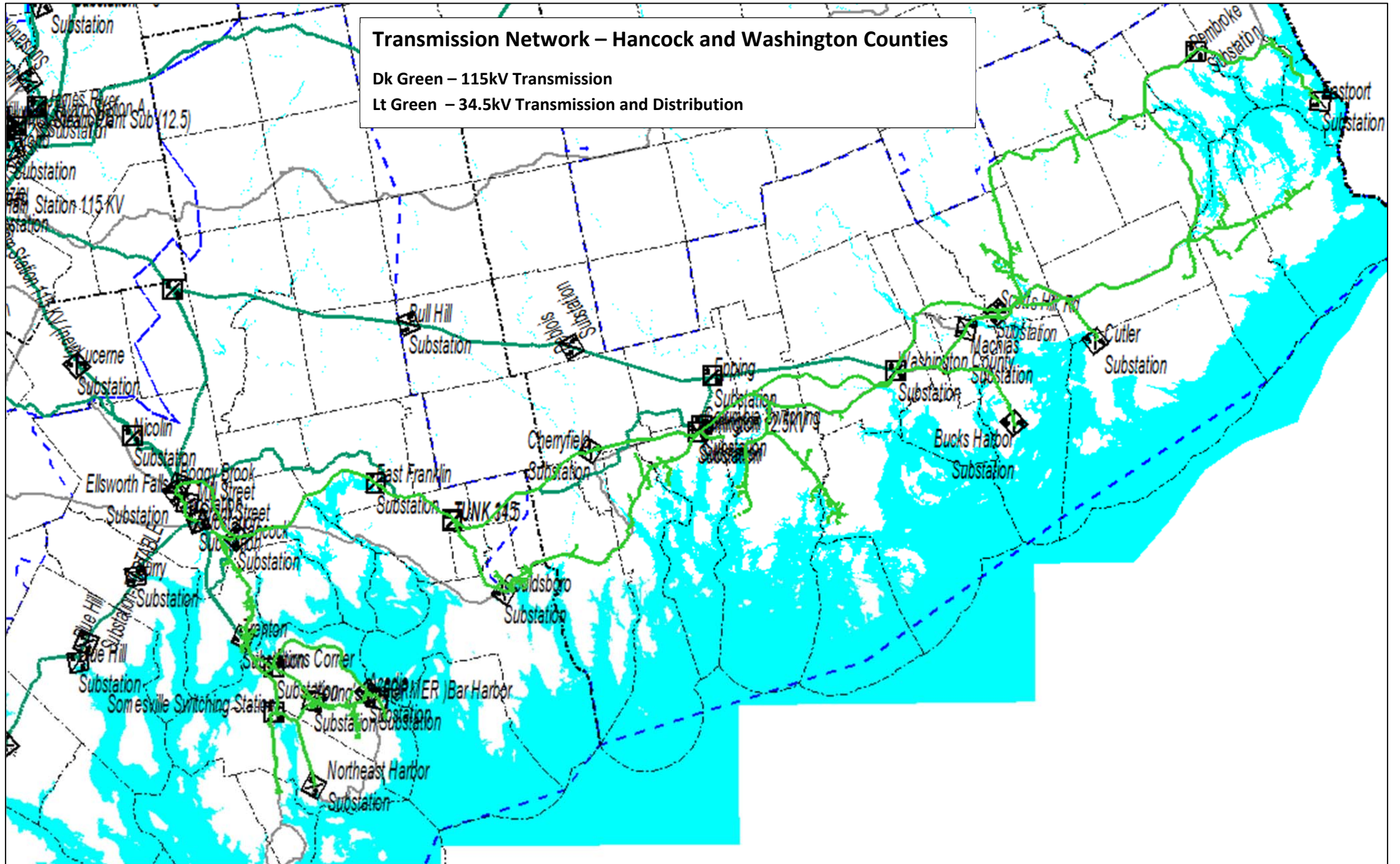




# Transmission Network – Northern Division

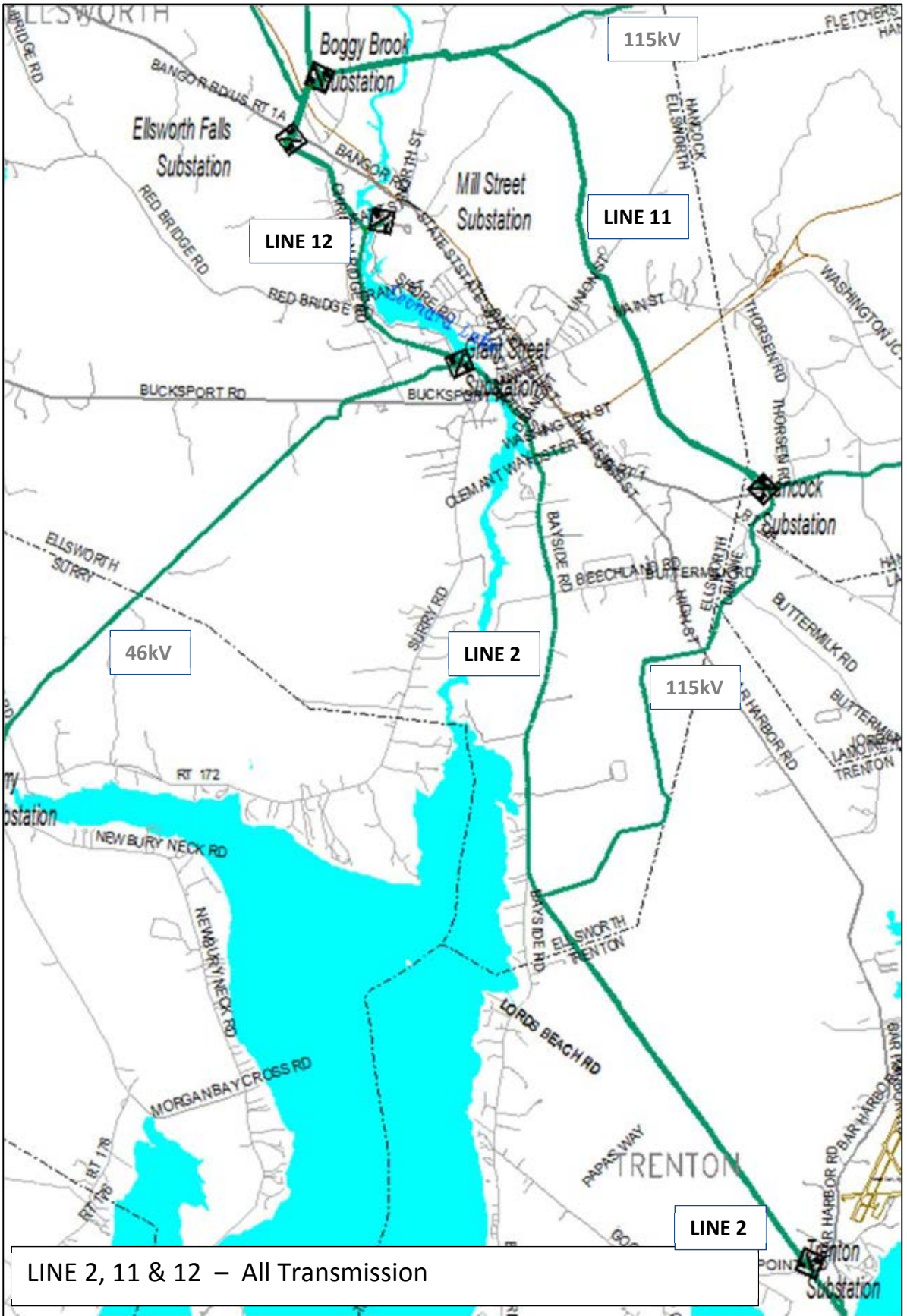
Dk Green – 46kV, 115kV & 345kV Transmission





Transmission vs Distribution maps for 34.5kV lines shown on next pages.





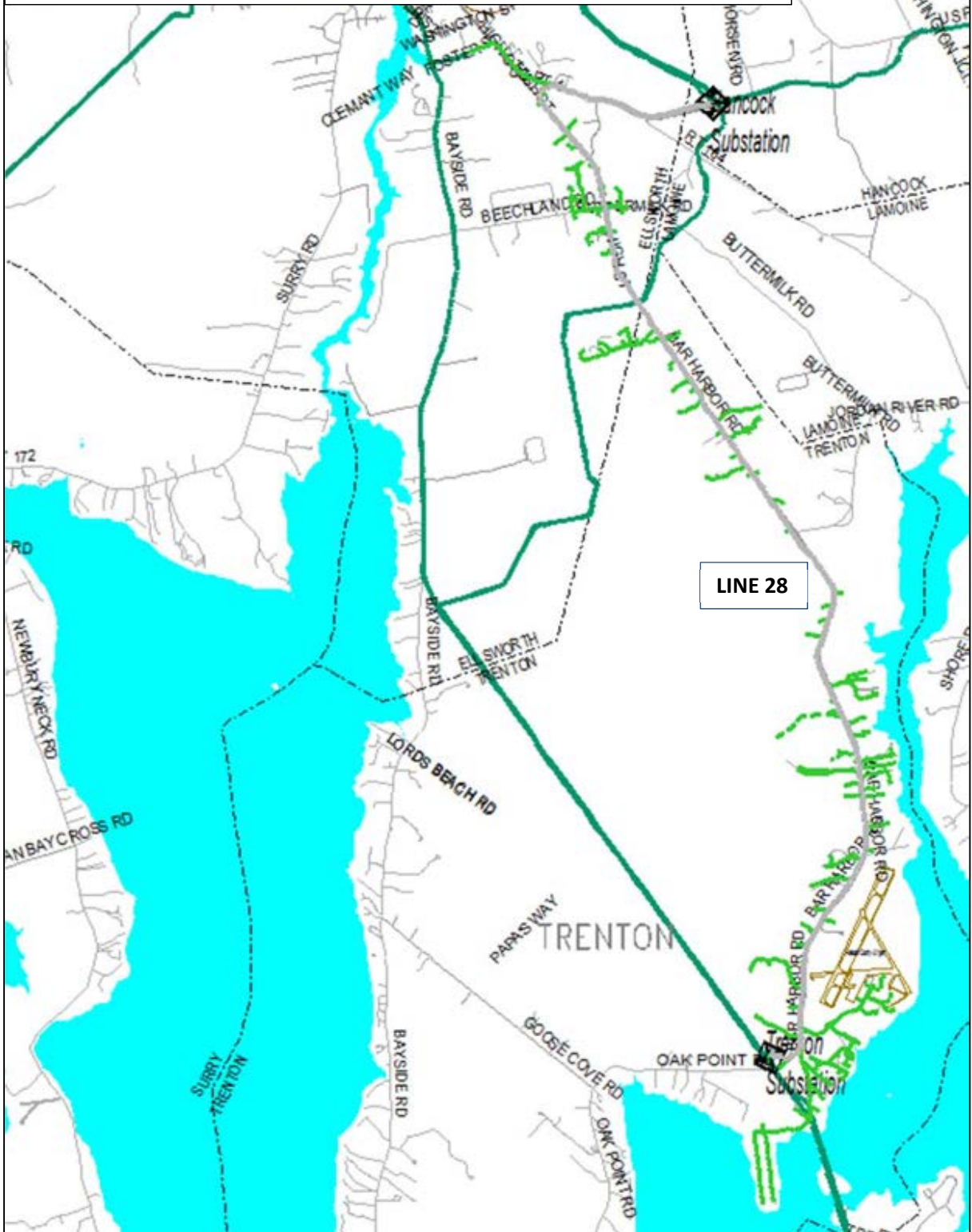
LINE 2, 11 & 12 – All Transmission

# LINE 28– Transmission versus Distribution

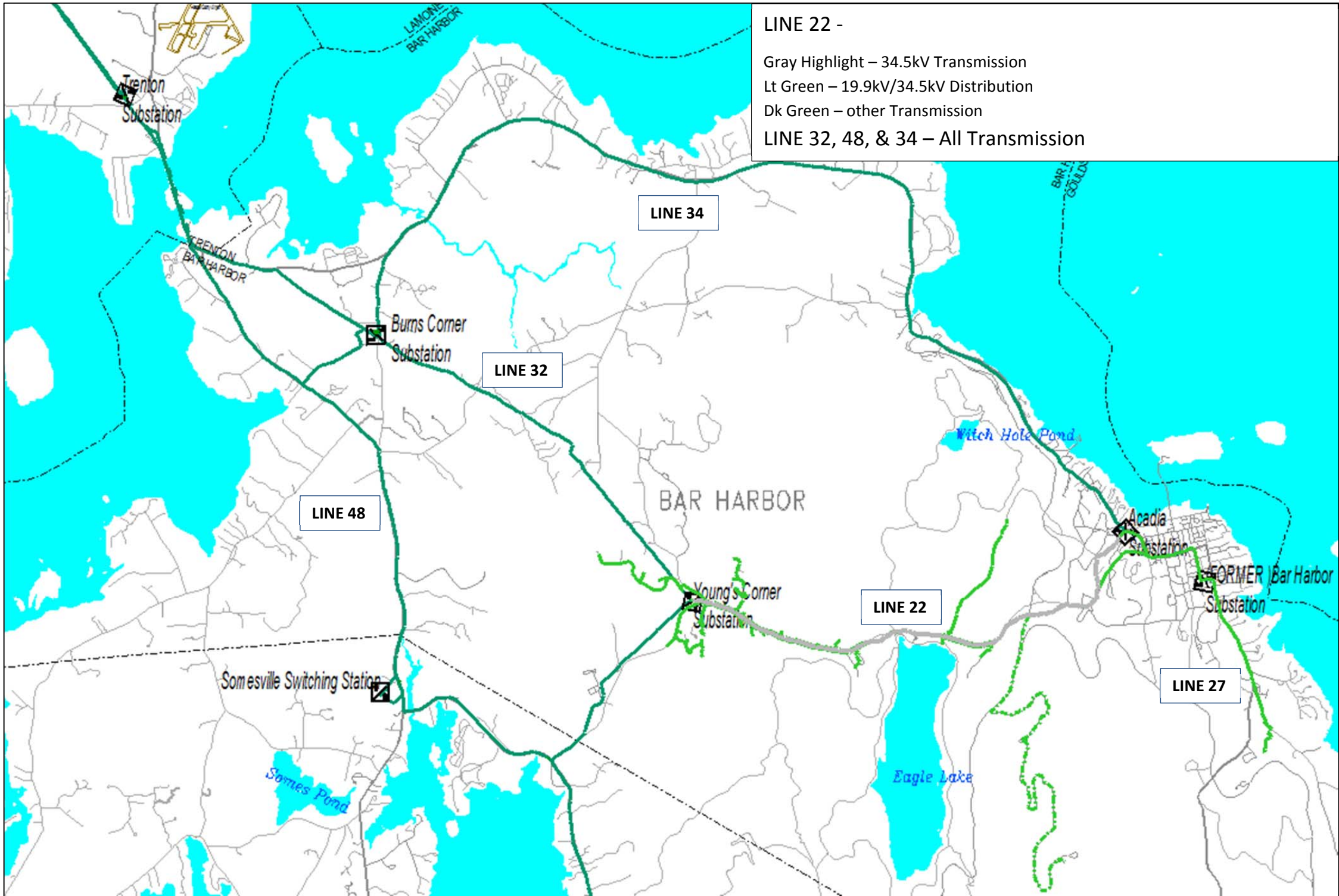
Gray Highlight – 34.5kV Transmission

Lt Green – 19.9kV/34.5kV Distribution

Dk Green – other Transmission





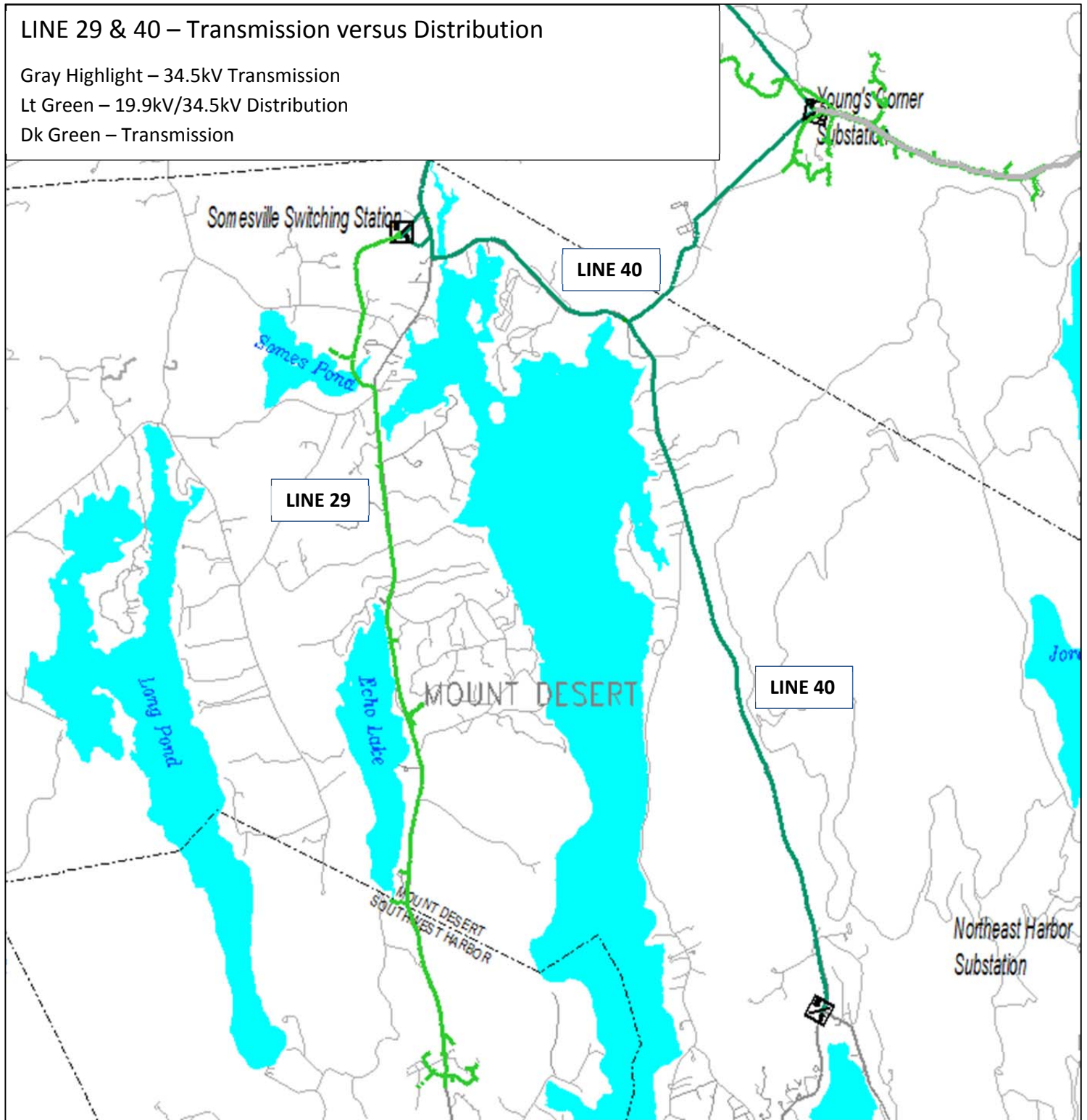


# LINE 29 & 40 – Transmission versus Distribution

Gray Highlight – 34.5kV Transmission

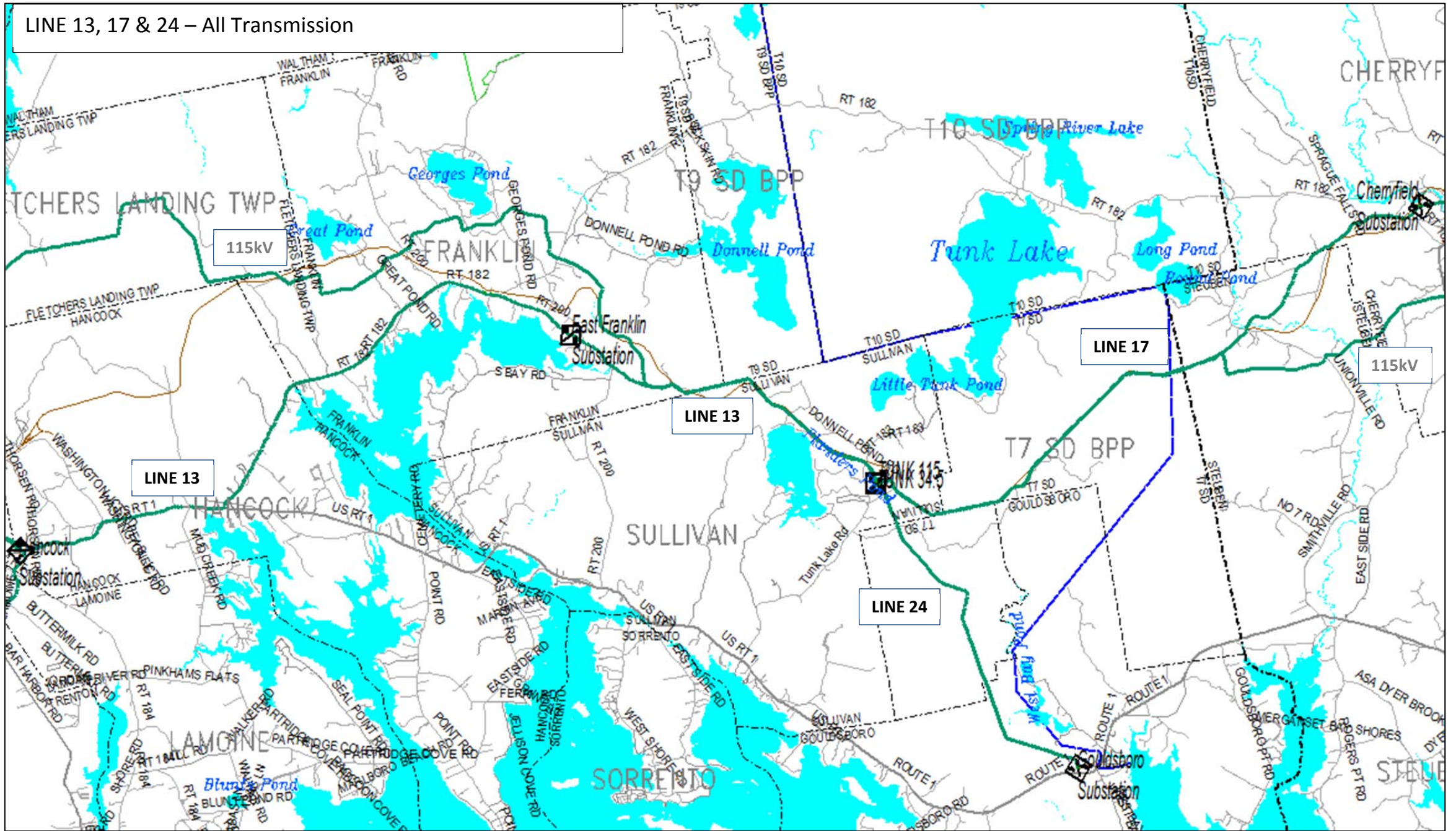
Lt Green – 19.9kV/34.5kV Distribution

Dk Green – Transmission





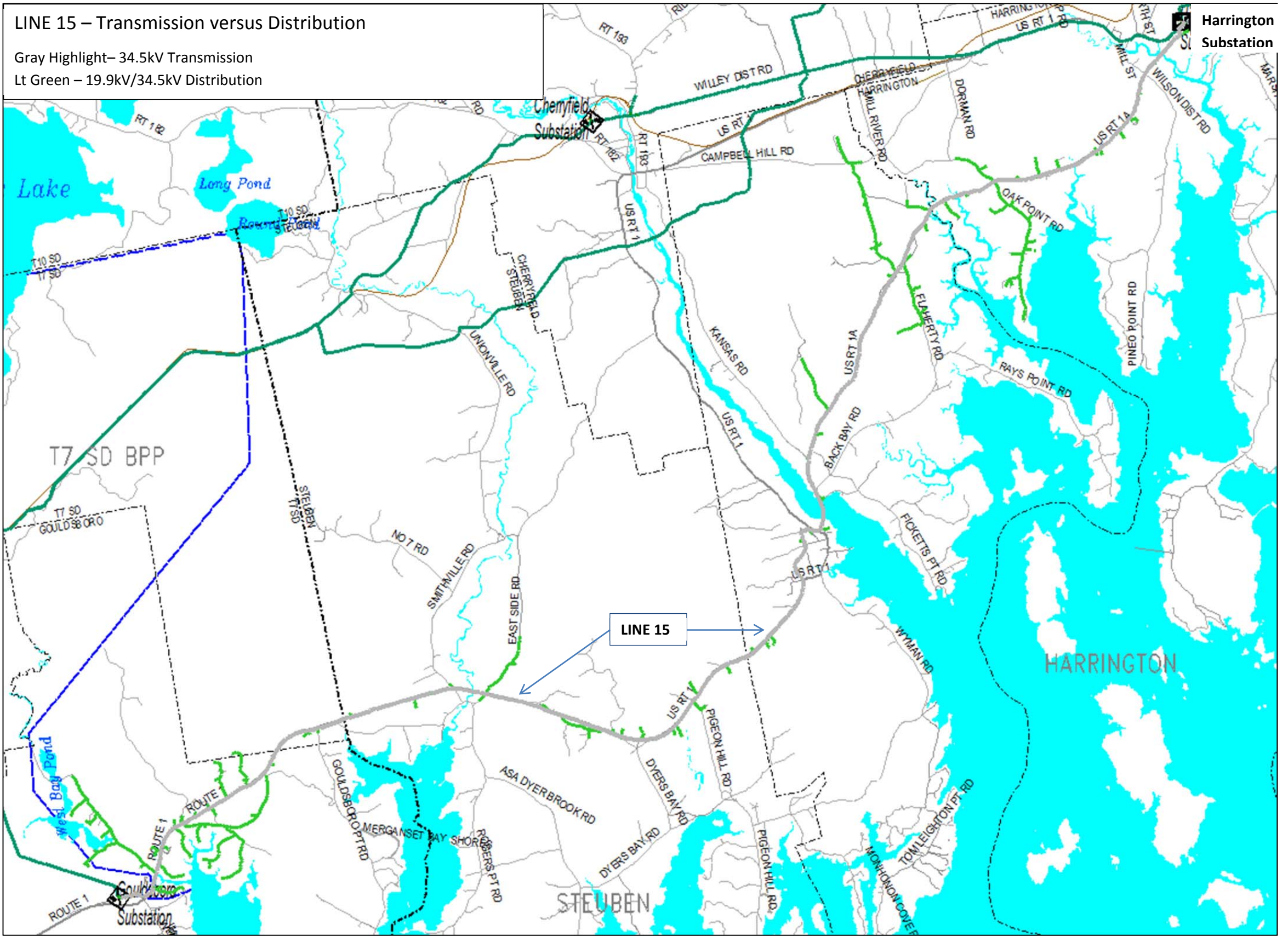
LINE 13, 17 & 24 – All Transmission





# LINE 15 – Transmission versus Distribution

Gray Highlight – 34.5kV Transmission  
Lt Green – 19.9kV/34.5kV Distribution

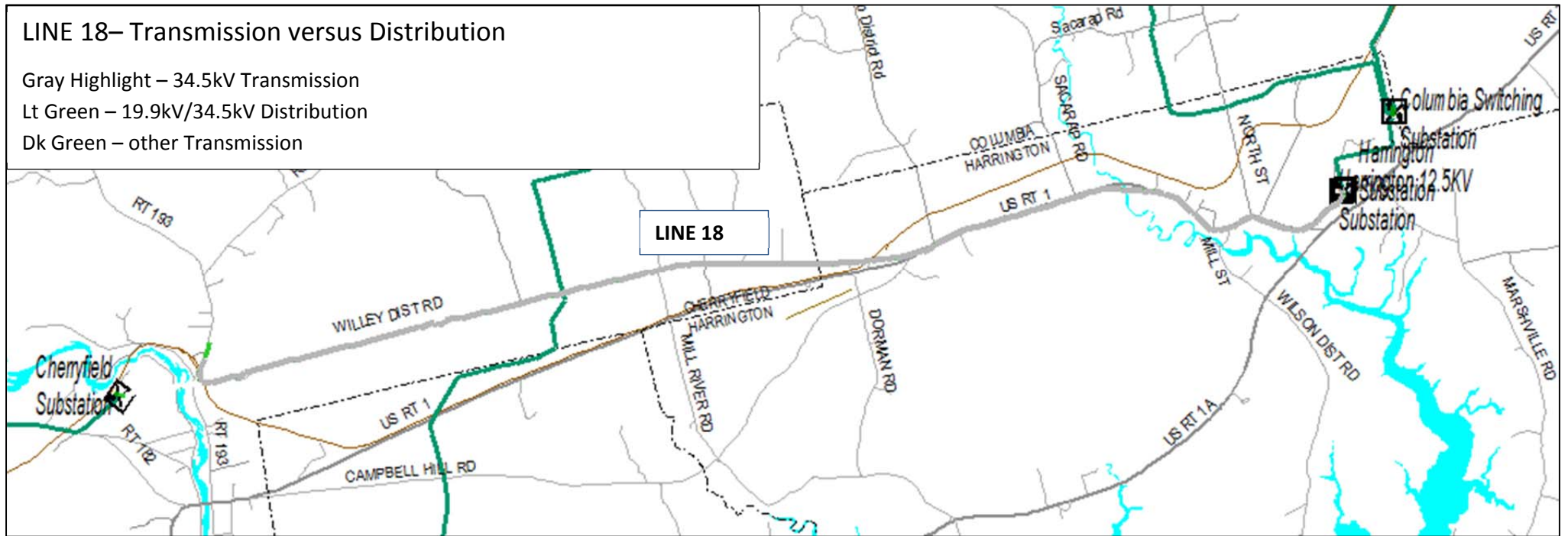


## LINE 18– Transmission versus Distribution

Gray Highlight – 34.5kV Transmission

Lt Green – 19.9kV/34.5kV Distribution

Dk Green – other Transmission



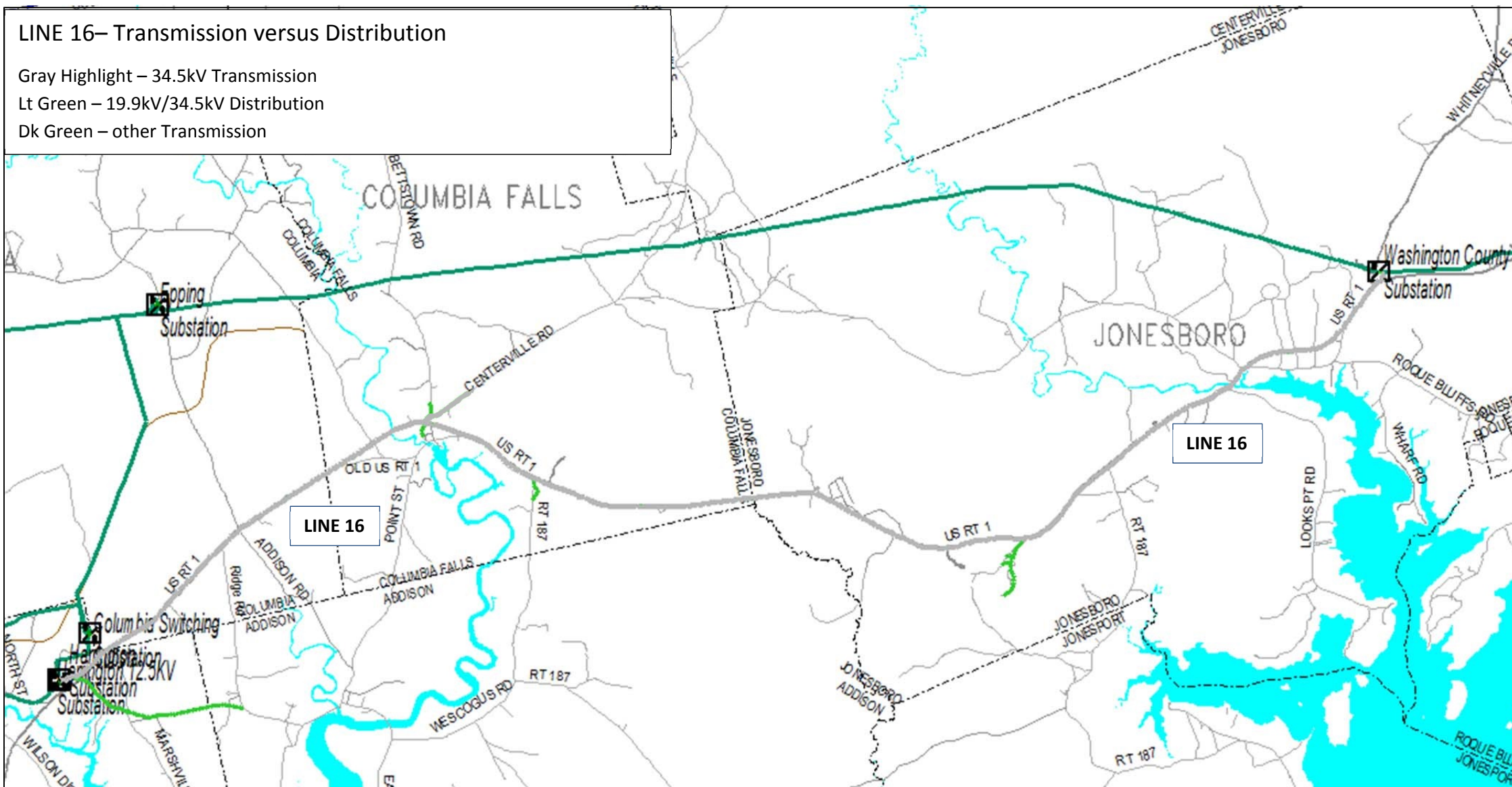


# LINE 16– Transmission versus Distribution

Gray Highlight – 34.5kV Transmission

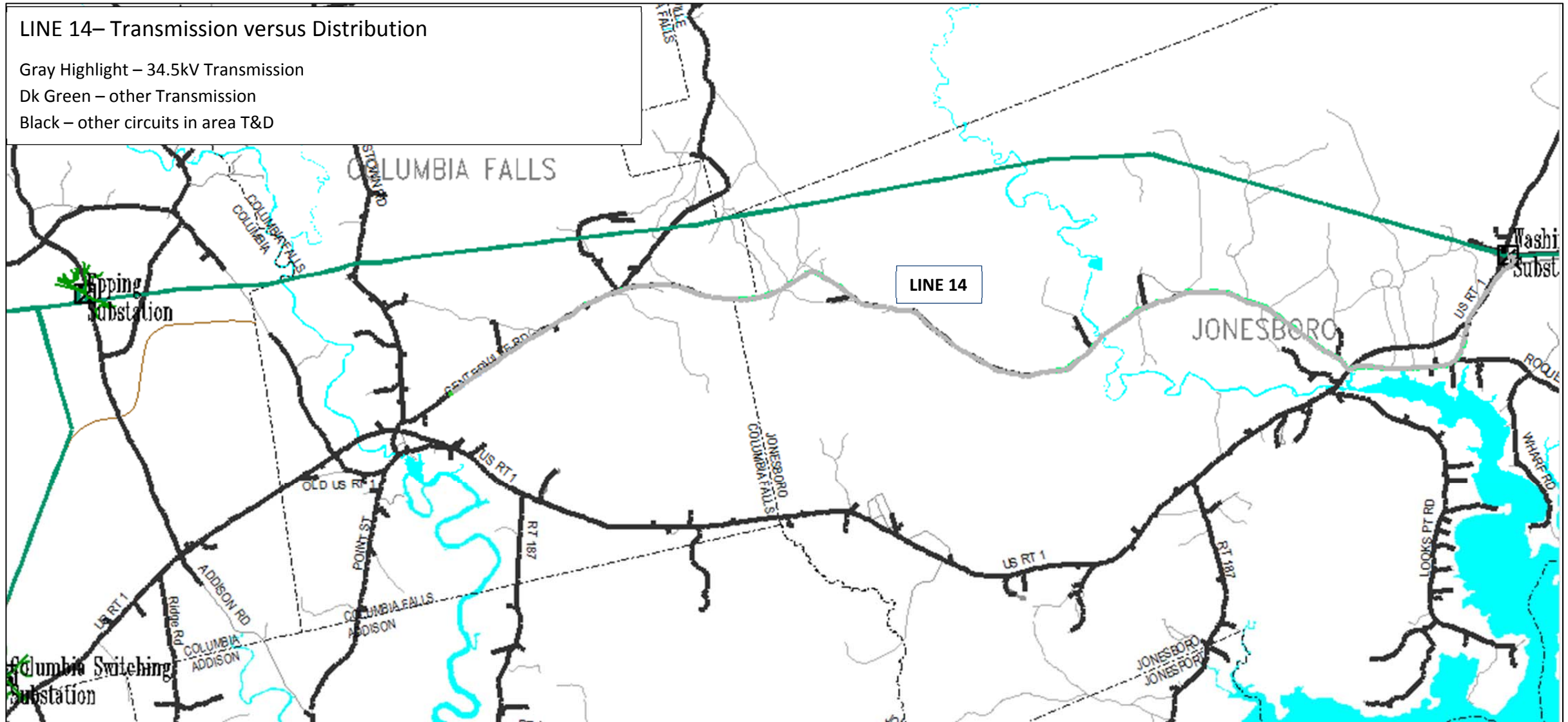
Lt Green – 19.9kV/34.5kV Distribution

Dk Green – other Transmission



# LINE 14- Transmission versus Distribution

- Gray Highlight – 34.5kV Transmission
- Dk Green – other Transmission
- Black – other circuits in area T&D



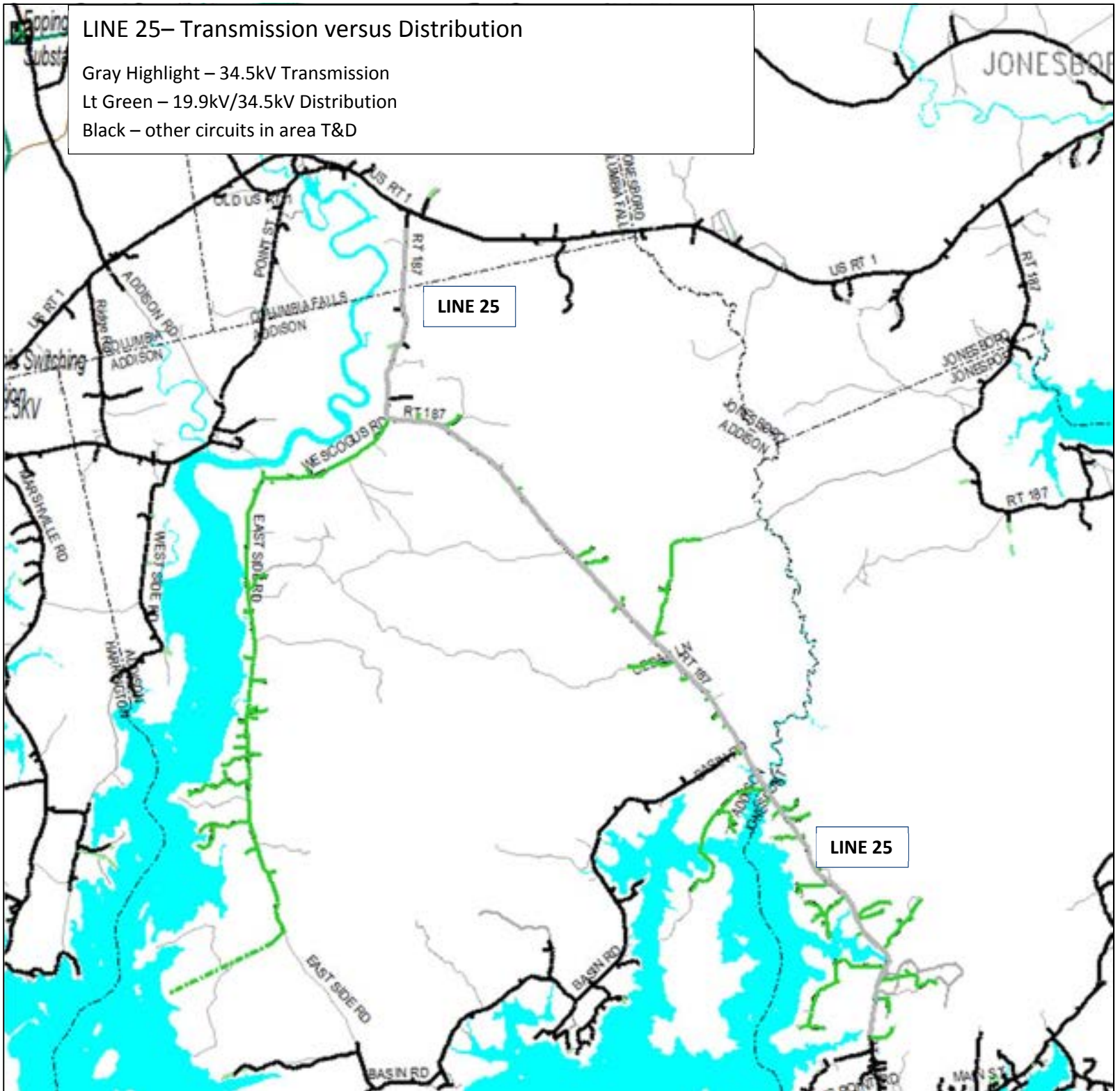


# LINE 25- Transmission versus Distribution

Gray Highlight - 34.5kV Transmission

Lt Green - 19.9kV/34.5kV Distribution

Black - other circuits in area T&D

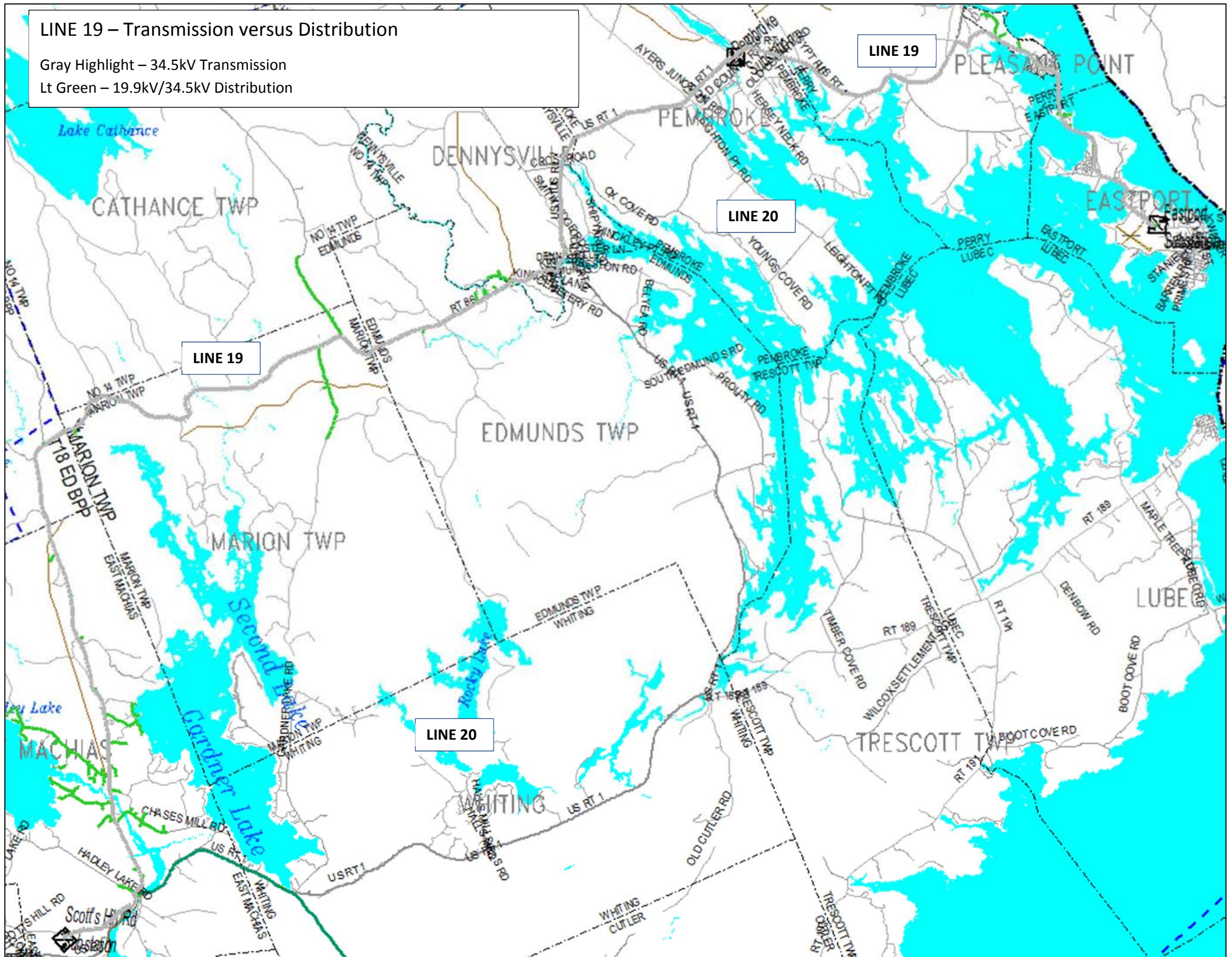




# LINE 19 – Transmission versus Distribution

Gray Highlight – 34.5kV Transmission

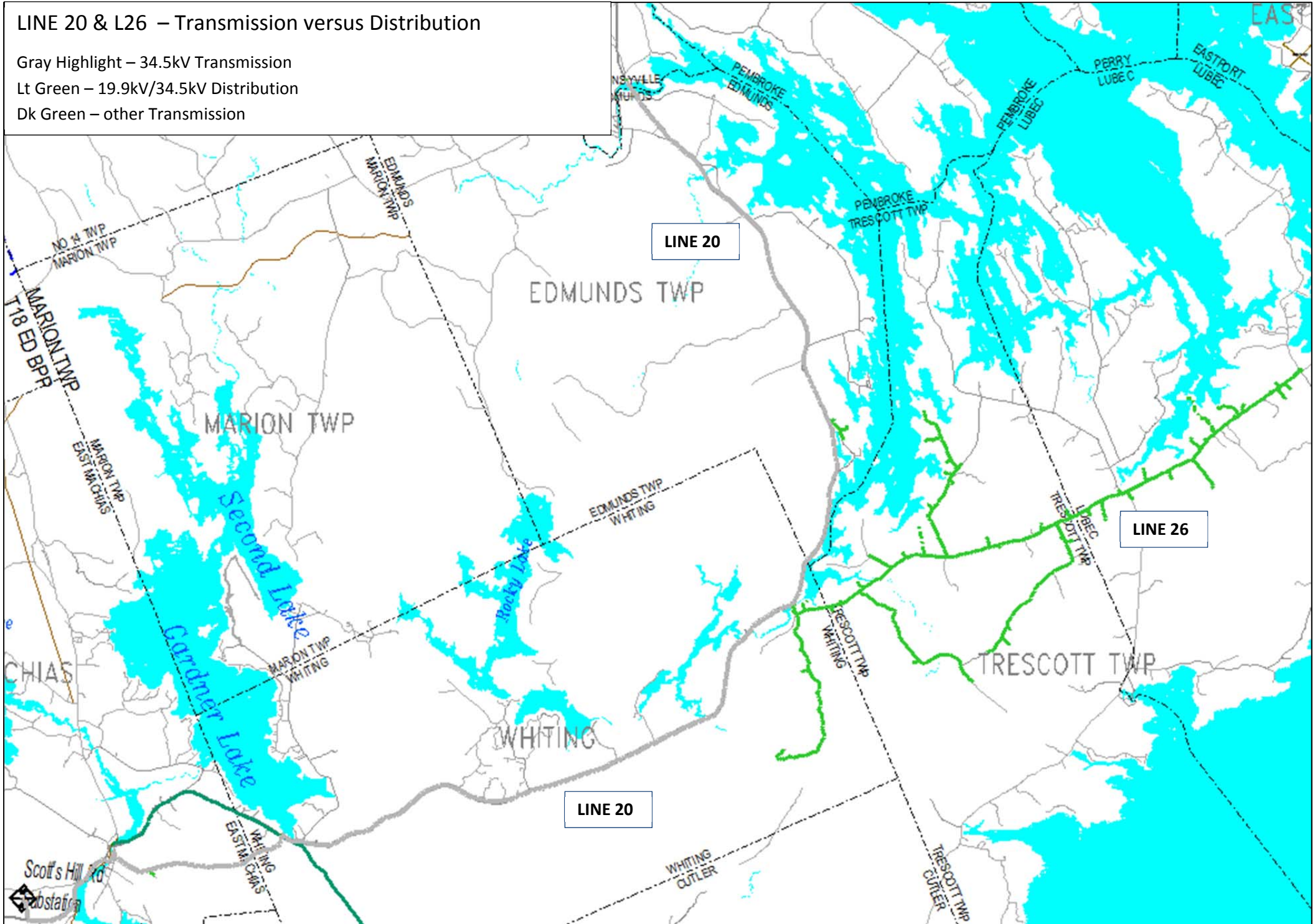
Lt Green – 19.9kV/34.5kV Distribution





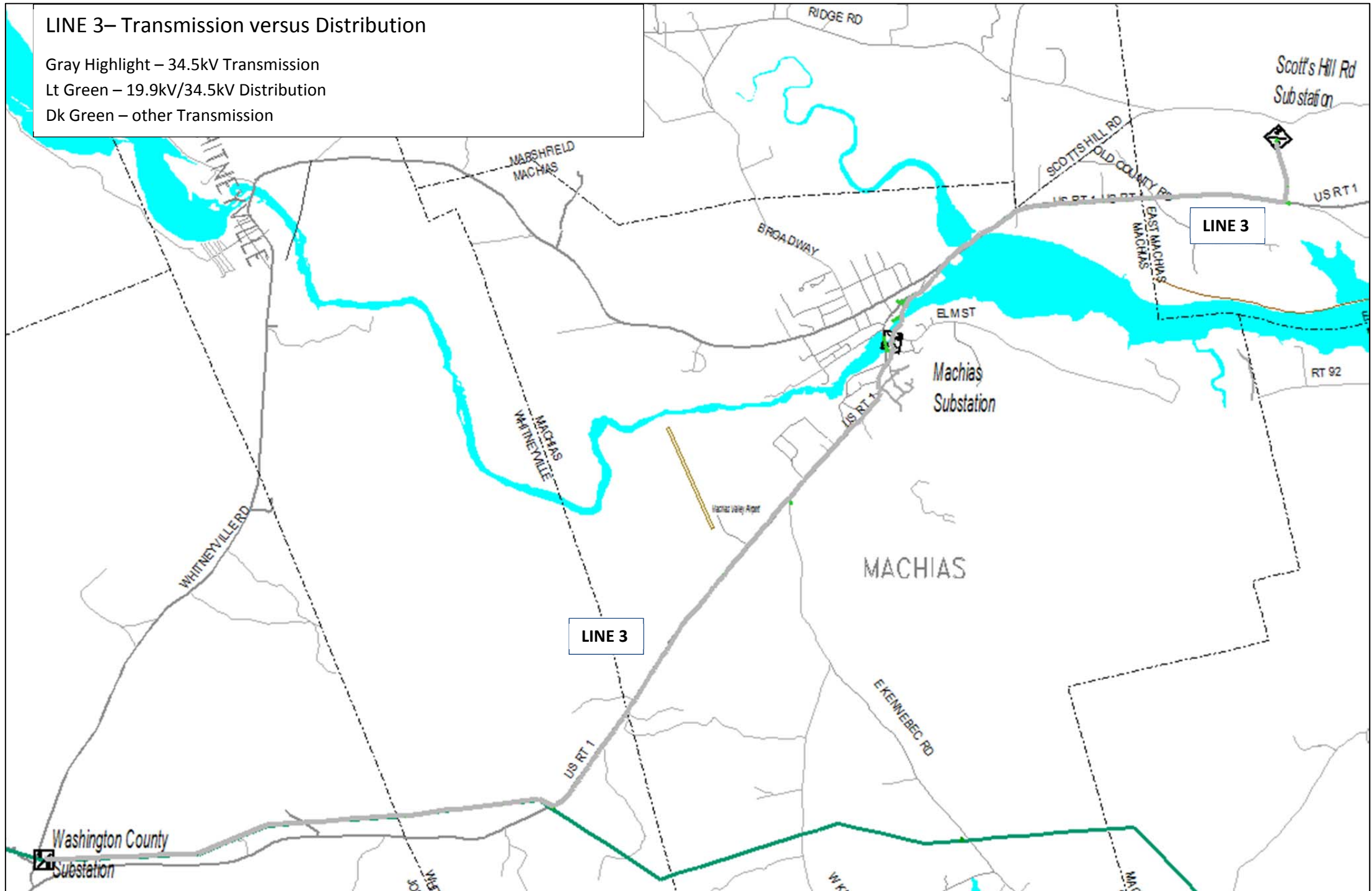
# LINE 20 & L26 – Transmission versus Distribution

Gray Highlight – 34.5kV Transmission  
Lt Green – 19.9kV/34.5kV Distribution  
Dk Green – other Transmission

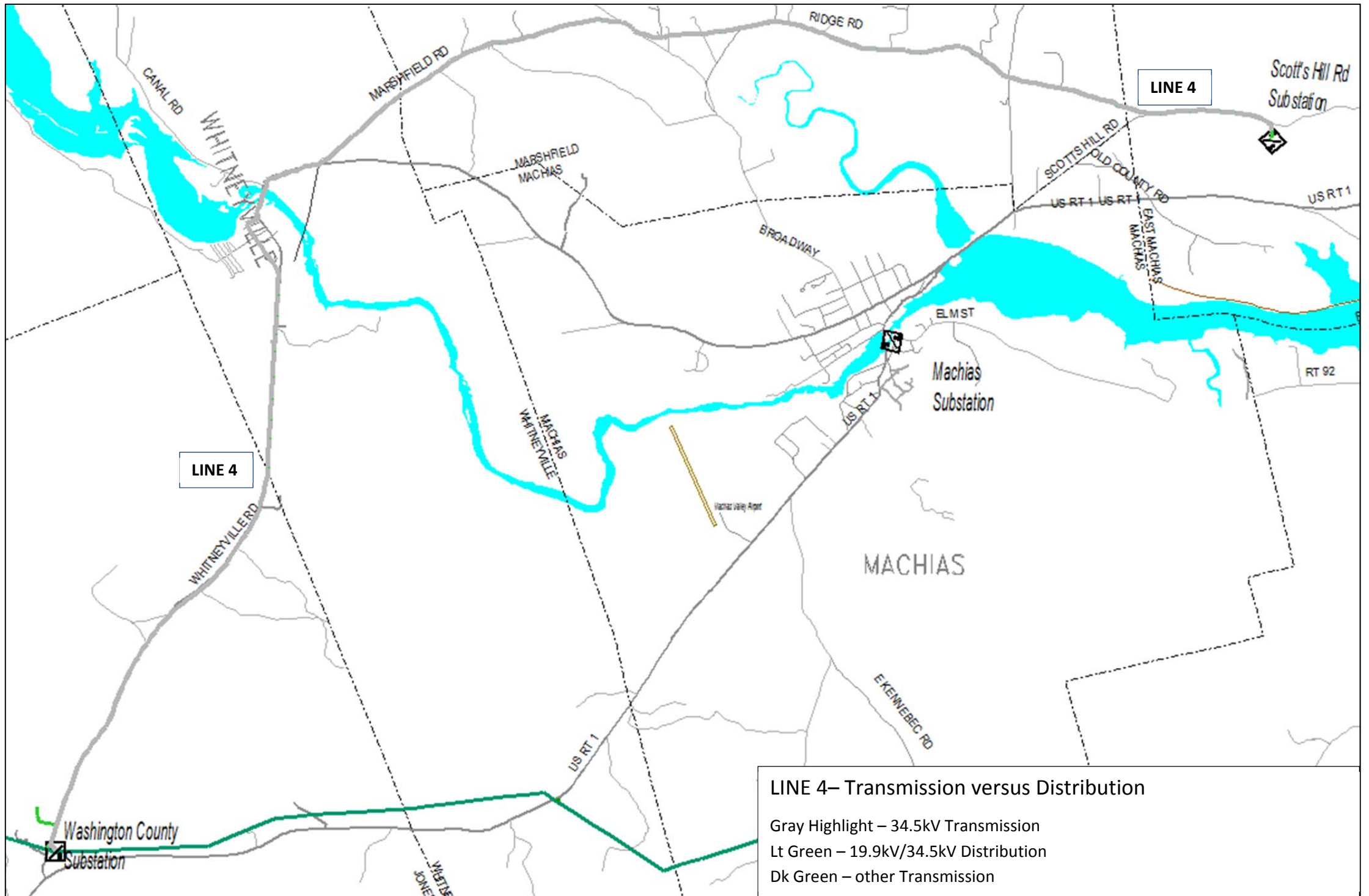


### LINE 3– Transmission versus Distribution

- Gray Highlight – 34.5kV Transmission
- Lt Green – 19.9kV/34.5kV Distribution
- Dk Green – other Transmission



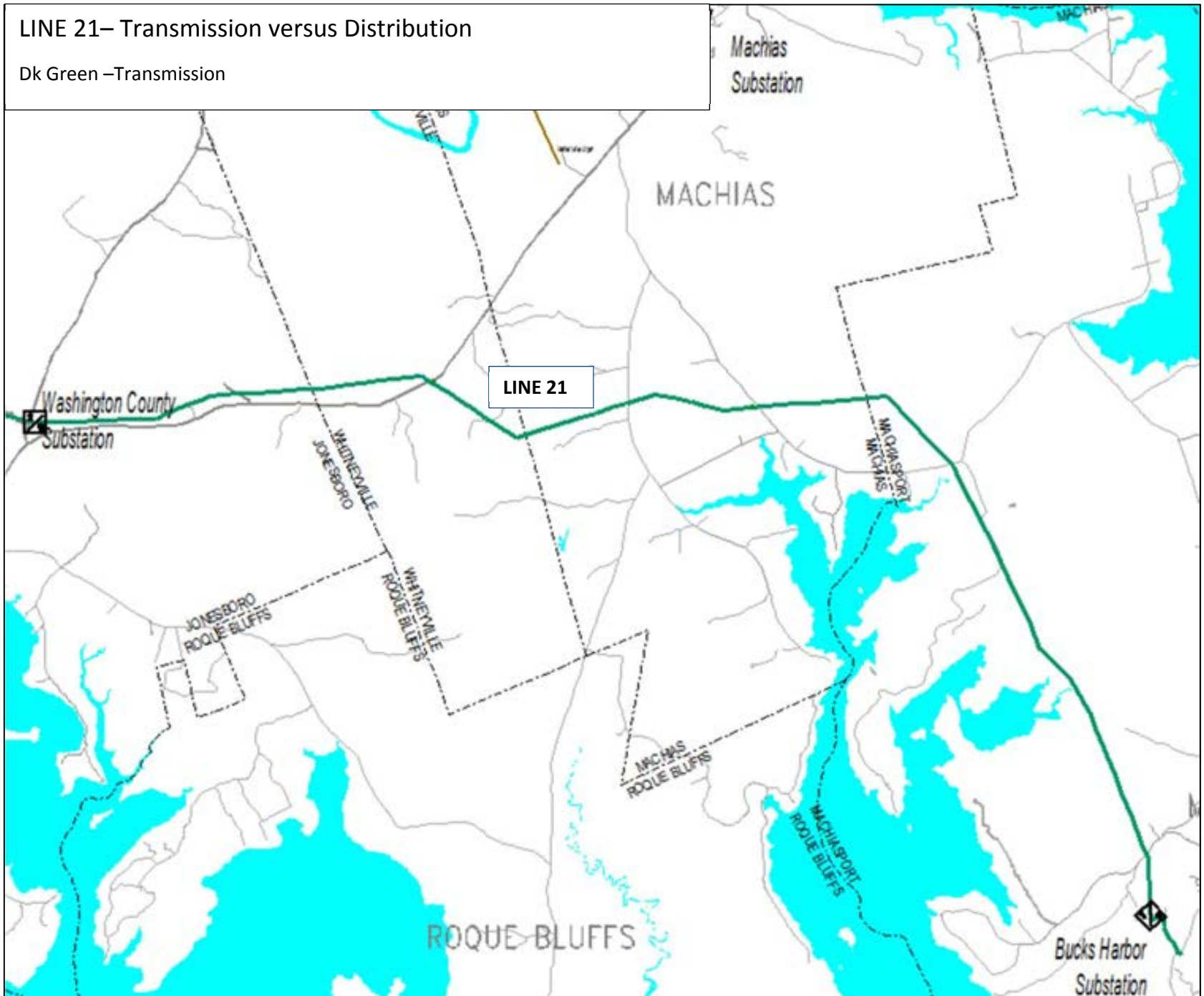




**LINE 4– Transmission versus Distribution**  
 Gray Highlight – 34.5kV Transmission  
 Lt Green – 19.9kV/34.5kV Distribution  
 Dk Green – other Transmission

# LINE 21– Transmission versus Distribution

Dk Green –Transmission





LINE 23 – All Transmission

